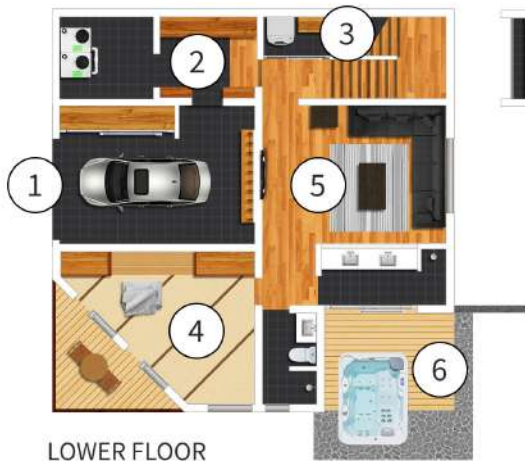


SESHU

CHALET



LOWER FLOOR



GROUND FLOOR



UPPER FLOOR

1. Garage
2. Dry room
3. Laundry room
4. Tatami room

5. Media room
6. Jacuzzi
7. Entrance
8. Guest bedroom

9. Kitchen area
10. Living area
11. Dining area

This chalet features

- Contemporary interiors and living spaces spread across three levels
- Stylish furnishings, high wood beam ceilings and blonde wood floors
- Modern open-plan kitchen with a large, separate kitchen worktop and bar stools
- Split dining table that seats twelve people
- Plenty of natural light and space for the entire group
- Flat-screen TV, Playstation, Apple TV and a modern fireplace in the living room
- A special outdoor jacuzzi for eight people
- Expansive terrace on the first floor for summer barbecue
- Secure and heated dry room for skis and other sports equipment
- Indoor garage with space for one car and outdoor parking for two cars
- On-call driver to and from locations within the village and the Grand Hirafu Ski Gondola

Master Bedrooms 1 & 2

- Two spacious bedrooms
- Ensuite bathrooms with bathtubs
- Comfortable split king-size beds
- Sofas and lounge chairs for curling up with a book
- Large windows framing mountain views
- One with a private terrace and casual seating (first floor)

Guest Bedrooms 1 & 2

- Two identical bedrooms with split king-size beds
- Ensuite bathrooms with a shower
- Access to a shared terrace with casual seating
- Sofas for conversations and quiet moments

Guest Bedroom 3

- A *tatami*-style room for a glimpse of authentic Japanese living
- Access to a separate toilet and shower
- Can be converted into a twin bedroom, to sleep 2 guests
- Extra person can be accommodated at an additional cost